

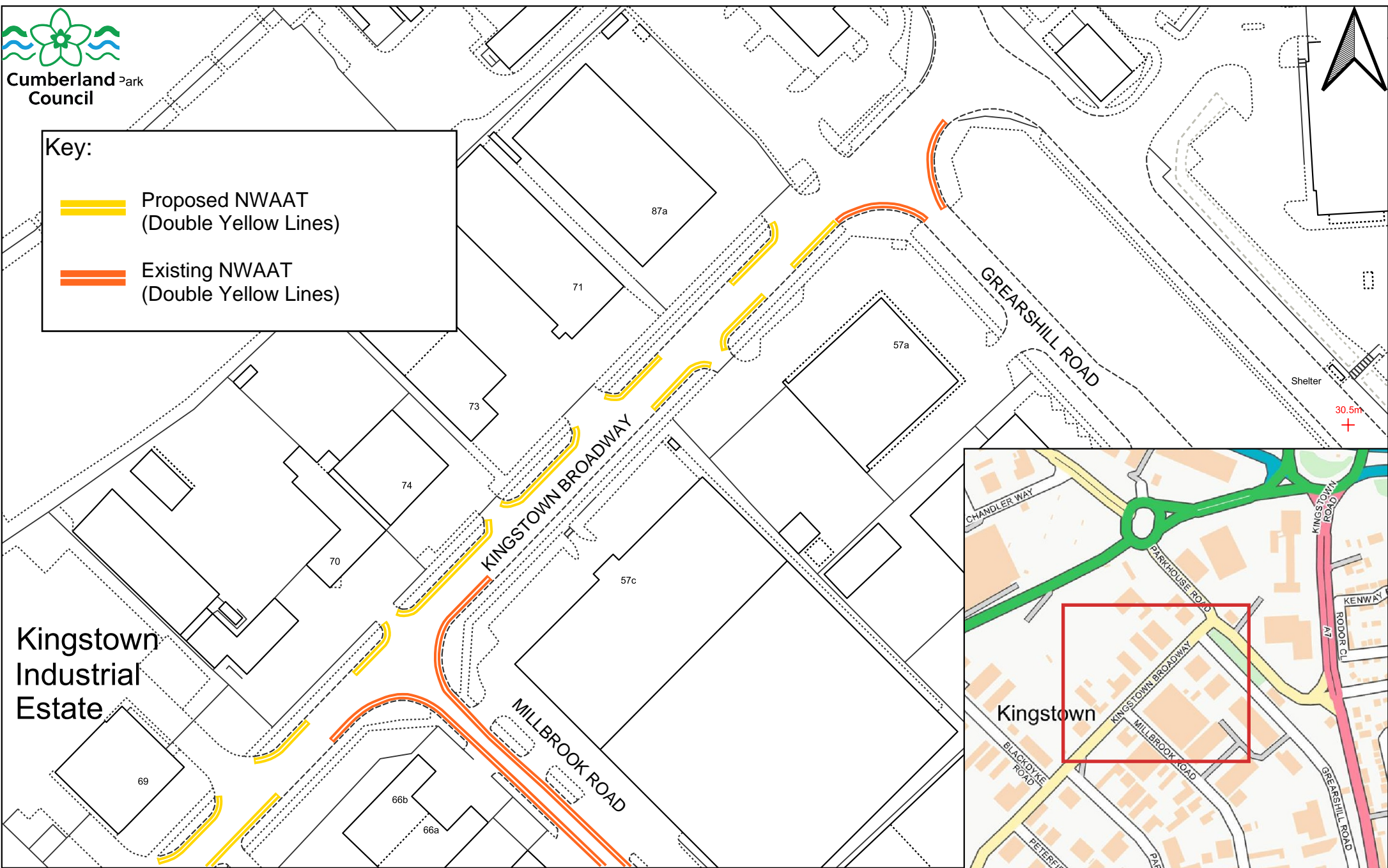




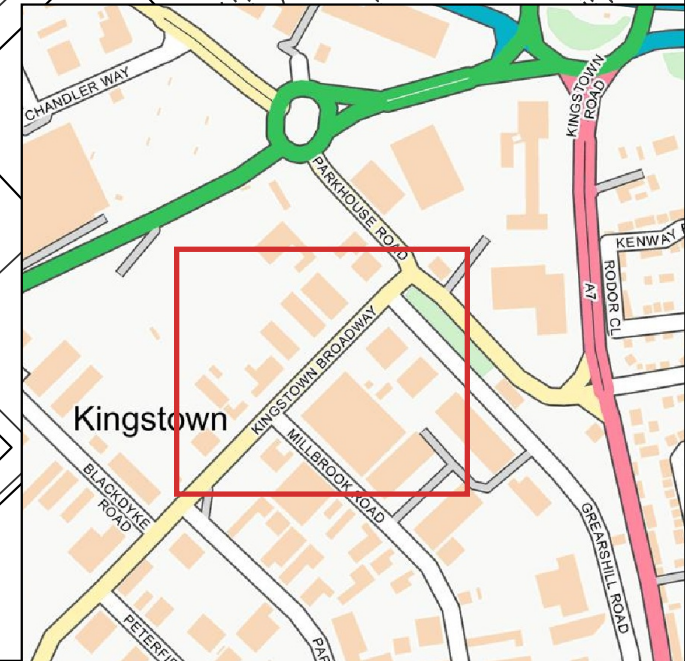
Cumberland ^{Park}
Council

Key:

-  Proposed NWAAT
(Double Yellow Lines)
-  Existing NWAAT
(Double Yellow Lines)



Kingstown
Industrial
Estate



TTRO Extents

Carlisle Traffic Regulation Order Review
Proposal No.16 (Plan 1 of 3)
Kingstown Broadway

Created by: K.Wilkinson
Created on: 31/01/2025
Scale: Not to scale

Parkhouse Building,
Baron Way,
Kingmoor Business Park,
Carlisle, CA6 4SJ.